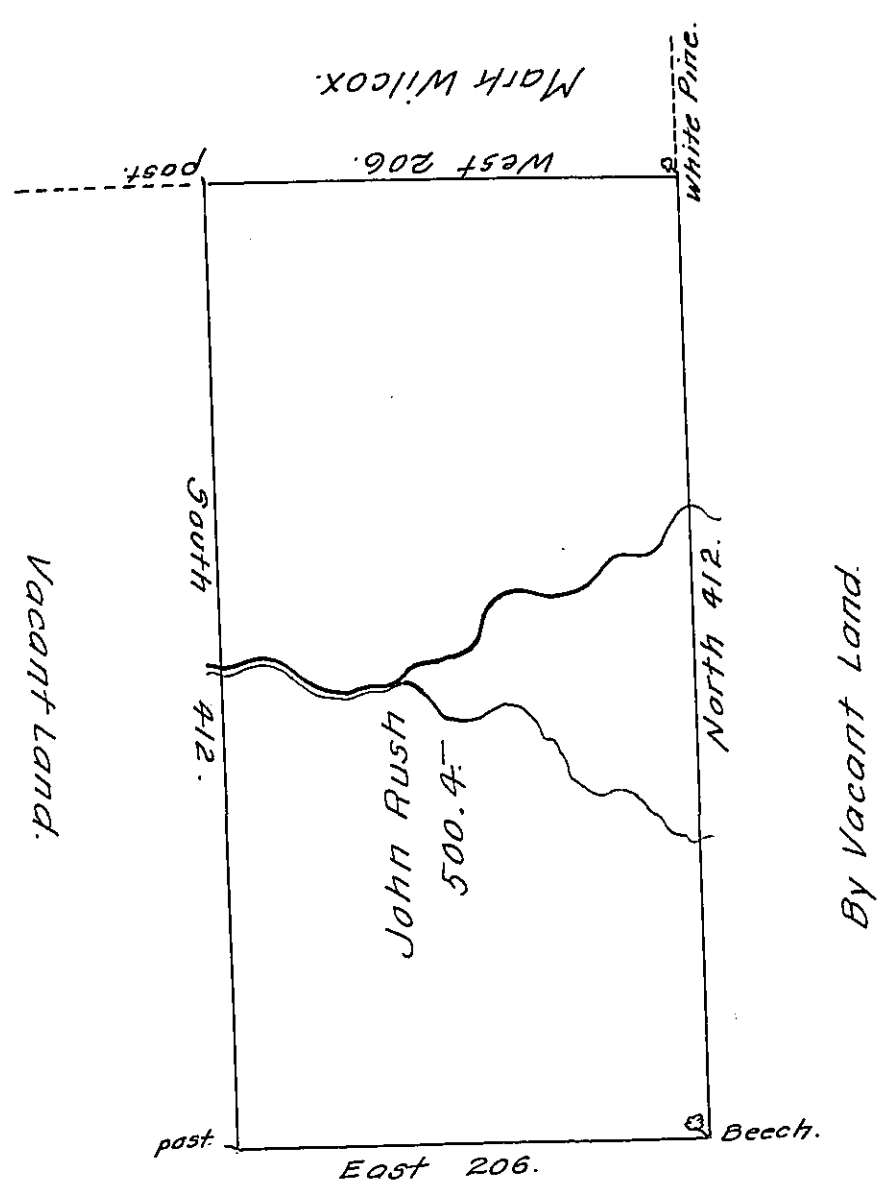


FORM No. 1.



By Vacant Land.

The Draught of a Tract of Land called — situate on the waters of Crooked Creek, near the Line between the Districts N<sup>o</sup> 17 and 18 in the County of Northumberland; containing Five hundred acres 72 Perches with usual allowance for Roads, Survey'd the 24<sup>th</sup> day of April, Anno Dom. 178<sup>th</sup> In pursuance of a warrant to John Rush bearing Date at Philad<sup>a</sup> the Seventeenth day of May Anno Dom: 1785 N<sup>o</sup> 99

To John Lukens, Esq<sup>r</sup> S.G. }  
of Pennsylvania }

W<sup>m</sup> Maclay, D.S.

\* 1787.

IN TESTIMONY that the above is a copy of the original remaining on file in the Department of Internal Affairs of Pennsylvania, made conformably to an Act of Assembly approved the 16th day of February, 1833, I have hereunto set my Hand and caused the Seal of said Department to be affixed at Harrisburg, this twenty eighth day of July, 1910.

*Henry Houck*  
Secretary of Internal Affairs.